

CONTACT US FOR BOOKING

+91-9336937265 / +91 9935079801



Maharaja Family



Maharaja



Luxury

Kumbh Cottages is more than just a place to stay — it's your gateway to experiencing the deep spiritual and cultural significance of the Kumbh Mela, the largest religious gathering on Earth. As the largest campsite at this major event, we focus on providing a comfortable, safe, and enriching experience for pilgrims, tourists, and spiritual seekers.

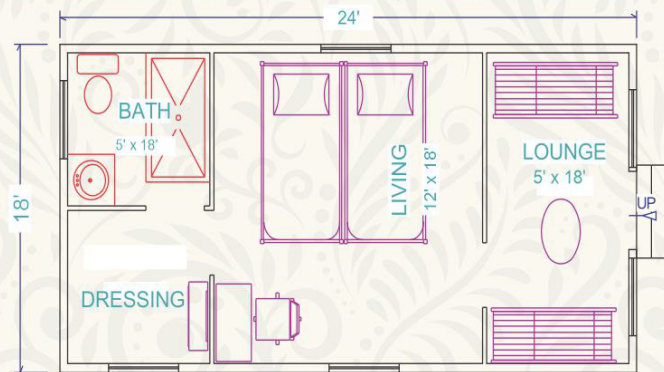
- ▶ **Premium Swiss Cottages**
- ▶ **Excellent Location - opp Fort & Sangam at 400m.**
- ▶ **Healthy Veg food**
- ▶ **Boat ride for Sangam Snan**
- ▶ **Modern Amenities- Religious Flavor**

Maharaj Family Suites

- ▶ Best in Class Swiss Cottages – 16' x 32'
- ▶ Bed Room Size – 16' x 16' with attached toilet/dressing & balcony with provision on Extra Beds / Mattresses to suite your family size
- ▶ Pitched on raised platform – Safety & Majestic view
- ▶ Wooden Flooring with Carpet in Bedroom
- ▶ Four Single beds suitable for 4 adults with high-end mattress, quilt & linen
- ▶ Western Toilets with running water & hot water facility

Inclusions:

- ▶ All meals included – Breakfast/Lunch/High Tea/Dinner.
- ▶ Shared boat ride for Snan at Triveni Sangam with attendant.
- ▶ Four Mineral water bottles per day.
- ▶ Group Kumbh Mela walking tour with attendant.
- ▶ One Tupperware bottle with Holy Ganga Jal .
- ▶ Rates for 4 pax per cottage per night.
- ▶ Extra persons / beds chargeable @ Rs.4,000/pax



₹ 45,000/-

per night (peak days)

* Taxes Extra

(Only Three Night Package)

₹ 35,000/-

per night (non peak days)

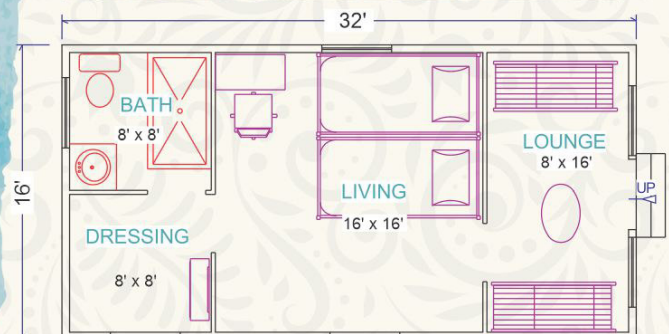
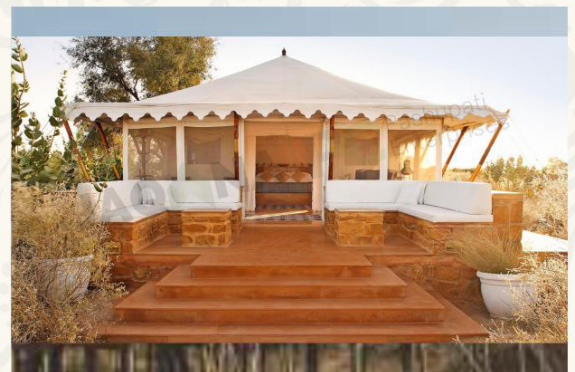
* Taxes Extra

Maharaja Suites

- ▶ Best in Class Swiss Cottages – 16' x 32'
- ▶ Bed Room Size – 16' x 16' with attached toilet/balcony .
- ▶ Pitched on raised platform – Safety & Majestic view.
- ▶ Sit-out balcony with two chairs & a table.
- ▶ Wooden Floor.
- ▶ Two single beds with high-end mattress, quilt & linen. Family Cottages with four beds.
- ▶ Western Toilets with running water & hot water.

Inclusions:

- ▶ All meals included – Breakfast/Lunch/ High Tea/ Dinner
- ▶ Shared boat ride for Snan at Triveni Sangam with attendant
- ▶ Two Mineral water bottles per day
- ▶ Group Kumbh Mela walking tour with attendant
- ▶ One Tupperware bottle with Holy Ganga Jal



₹ 40,000/-

per night (peak days)

* Taxes Extra

(Only Three Night Package)

₹ 30,000/-

per night (non peak days)

* Taxes Extra

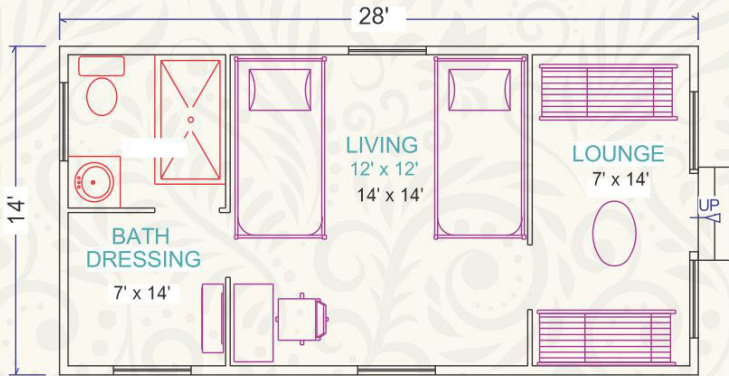


Luxury Suites

- ▶ Classic Swiss Cottages – 14' x 28'
- ▶ Bed Room Size – 14' x 14' with attached toilet & balcony
- ▶ Pitched on raised platform – Safety & Majestic view
- ▶ Wooden Flooring with Carpet in Bedroom
- ▶ Twin bed with luxury mattress, quilt & linen
- ▶ Western Toilets with running water & hot water facility

Inclusions:

- ▶ All meals included – Breakfast/Lunch/ High Tea/ Dinner
- ▶ Shared boat ride for Snan at Triveni Sangam with attendant
- ▶ Two Mineral water bottles per day
- ▶ Rates for 2 pax per cottage per night.
- ▶ Extra persons / beds chargeable @ Rs.3,500/pax



₹ 25,000/-

per night (peak days)
* Taxes Extra

(Only Three Night Package)

₹ 20,000/-

per night (non peak days)
* Taxes Extra

The Legacy of the Kumbh Mela

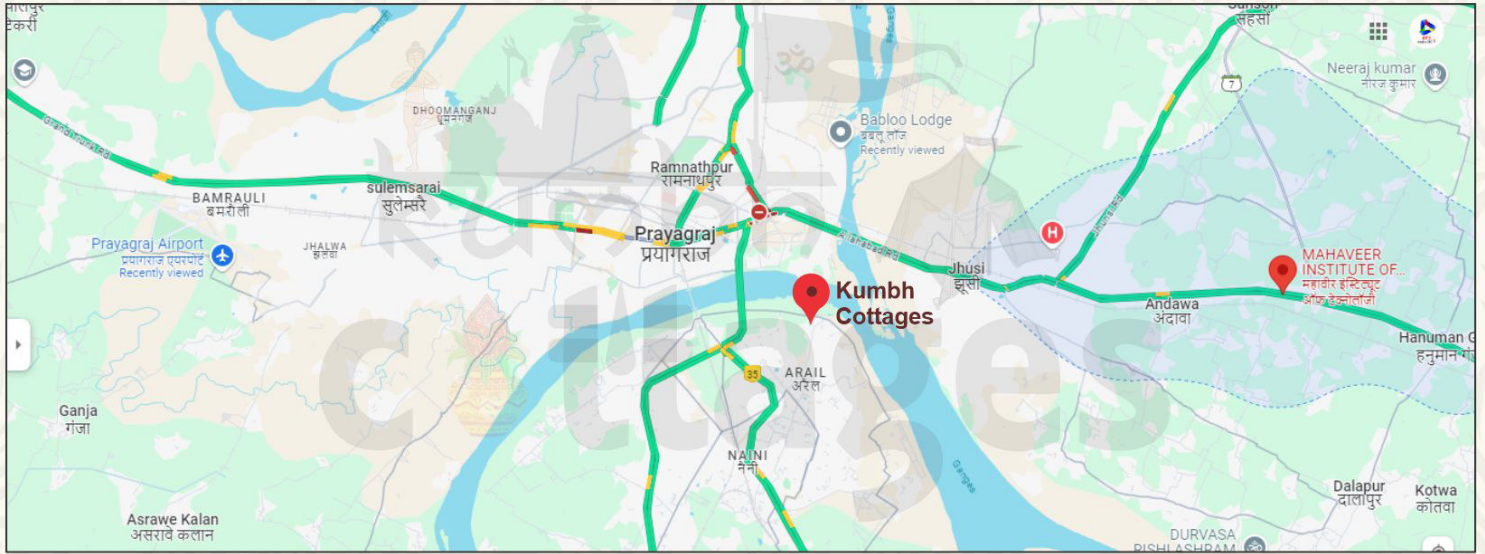
The Kumbh Mela is one of the world's oldest and largest religious festivals. Held every 12 years in Haridwar, Allahabad (Prayagraj), Nashik, and Ujjain, it attracts millions of devotees and spiritual seekers. The festival is centered around the belief that bathing in these sacred rivers washes away sins and grants spiritual liberation.

As the largest religious gathering of people on Earth, the Kumbh Mela offers a unique and transformative experience. At Kumbh Cottages, we provide visitors with the opportunity to join this sacred event while enjoying modern comforts and excellent facilities.

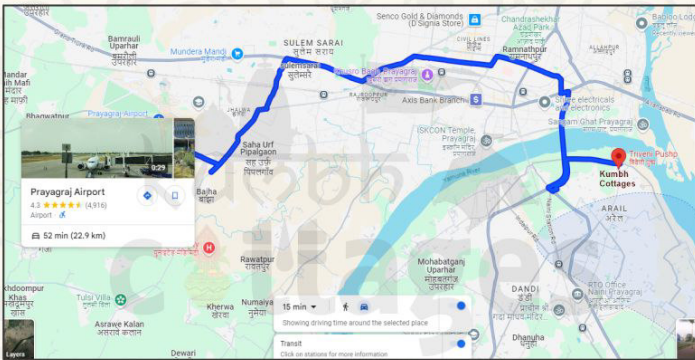
Bathing dates of Maha Kumbh 2025

| S.No. | Date | Day | Activity |
|-------|-------------|-----------|---------------------------------------|
| 1 | 13th Jan'25 | Monday | Paush Purnima |
| 2 | 14th Jan'25 | Tuesday | Makar Sankranti (1st Shahi Snan) |
| 3 | 29th Jan'25 | Wednesday | Mauni Amavasya Snan (2nd Shahi Snan) |
| 4 | 3rd Feb'25 | Monday | Basant Panchami Snan (3rd Shahi Snan) |
| 5 | 12th Feb'25 | Wednesday | Maghi Purnima Snan |
| 6 | 26th Feb'25 | Wednesday | Maha Shivratri Snan |

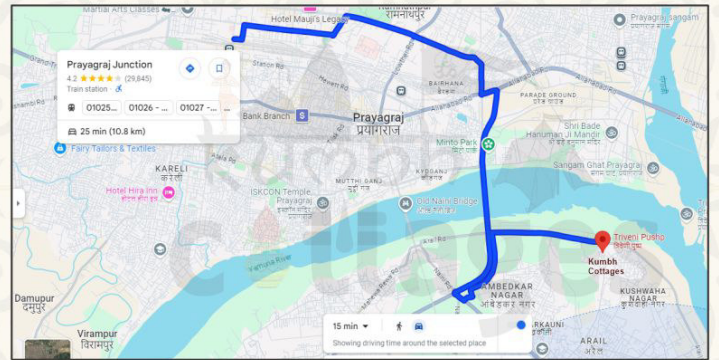
Location Map



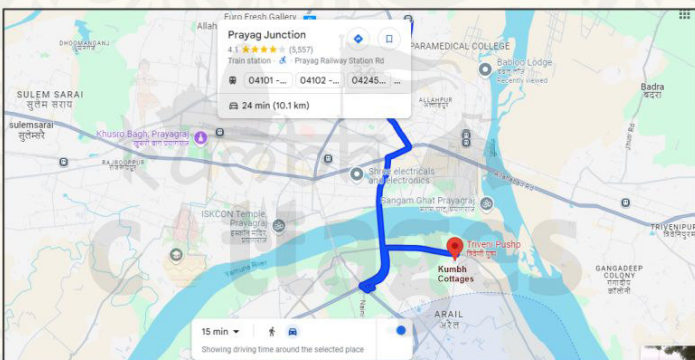
Airport to Kumbh Cottages - 20 KM



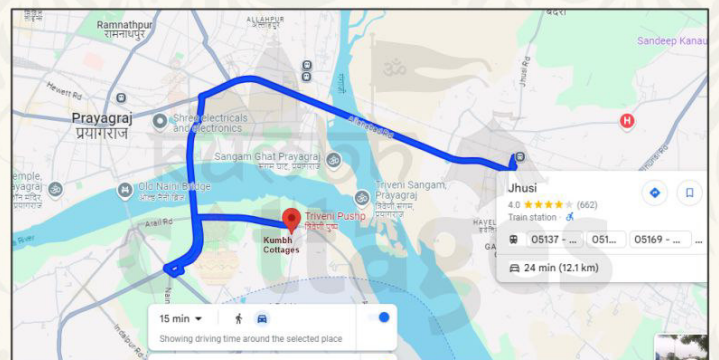
Prayagraj Junction to Kumbh Cottages - 10 KM



Prayagraj Junction to Kumbh Cottages - 10 KM



Jhusi Station to Kumbh Cottages - 10 KM



CONTACT US:

+91-9336937265 / +91-9935079801

KUMBH COTTAGES

A PROJECT OF AMARYOG VENTURES LLP & ARC MEDIA INC
A UNIT OF GROUPS FUTURE
REGD. OFF. - B-60, FIRST FLOOR, SECTOR-67, NOIDA-201301

PRIVATE CAMPSITE LOCATION :

SULTANKESHWAR MAHADEV PRACHIN MANDIR CAMPUS,
NEAR TO ARIAL GHAT/TRIVENI PUSP, ARIAL ROAD,
PRAYAGRAJ, UTTAR PRADESH-211008

WEBSITE - www.kumbhcottages.com

EMAIL - bookings@kumbhcottages.com

PRAYAGRAJ ADDRESS:

13 I, PRAYAG STREET, CHAITHAM LINES,
BANK ROAD CROSSING,
PRAYAGRAJ - 211002.